

Parcel	Status	Gross Acreage ±
A1	Sold	53.0
A2	Available	51.1
C1	Available	12.5
C2	Available	9.0
C3	Available	12.4
C4	Available	10.2
D1	Available	80.3
E1	Available	3.5
E2	Available	6.8
TOTAL		238.8

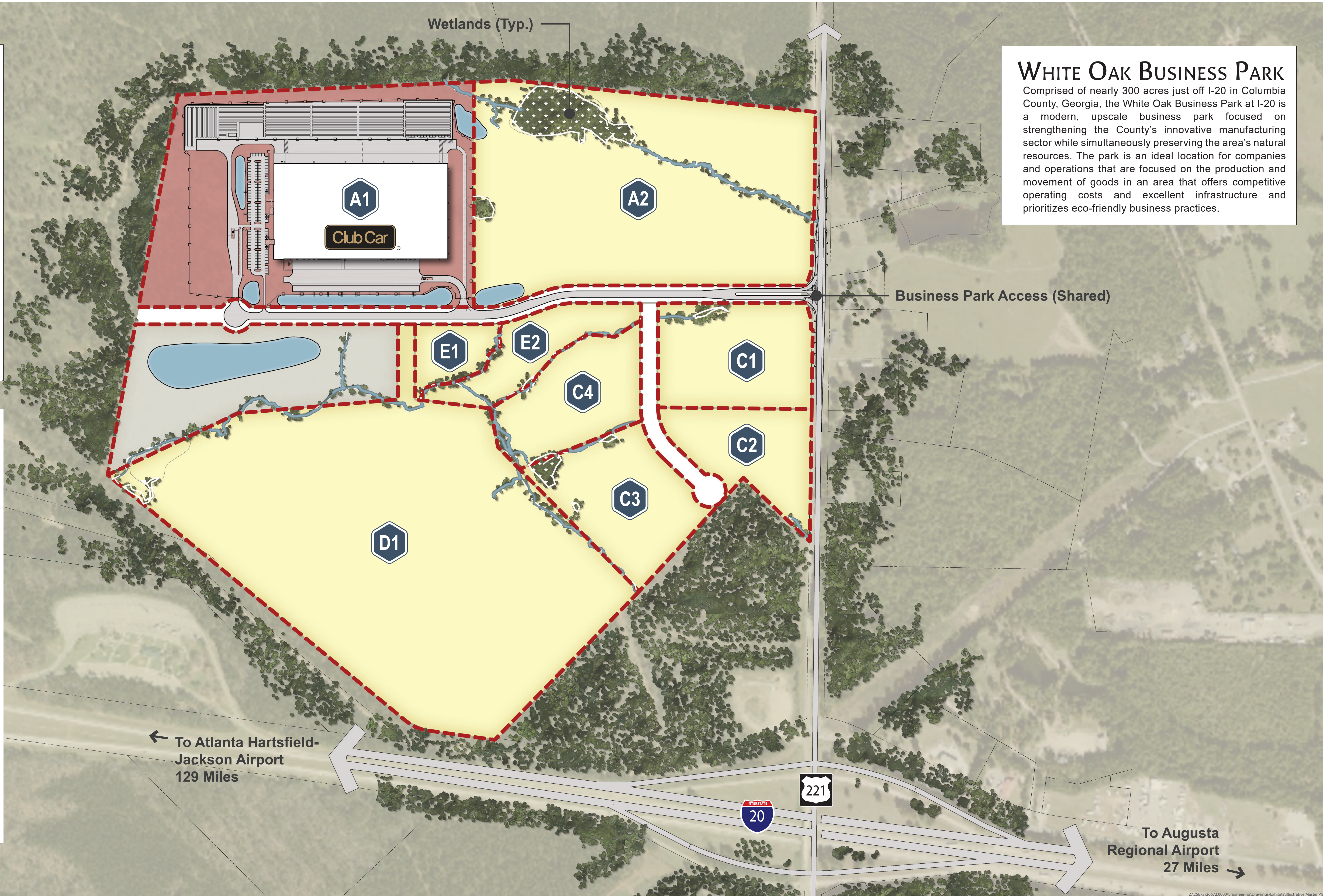
Available Sold

Unavailable

Notes
 Acreages above are approximate and subject to change. Future wetland impacts, required stormwater detention as well as site specific setbacks, etc... are not included as part of this exhibit.

NORTH

GRAPHIC SCALE: 1" = 300'
 (11X17: 1" = 600')



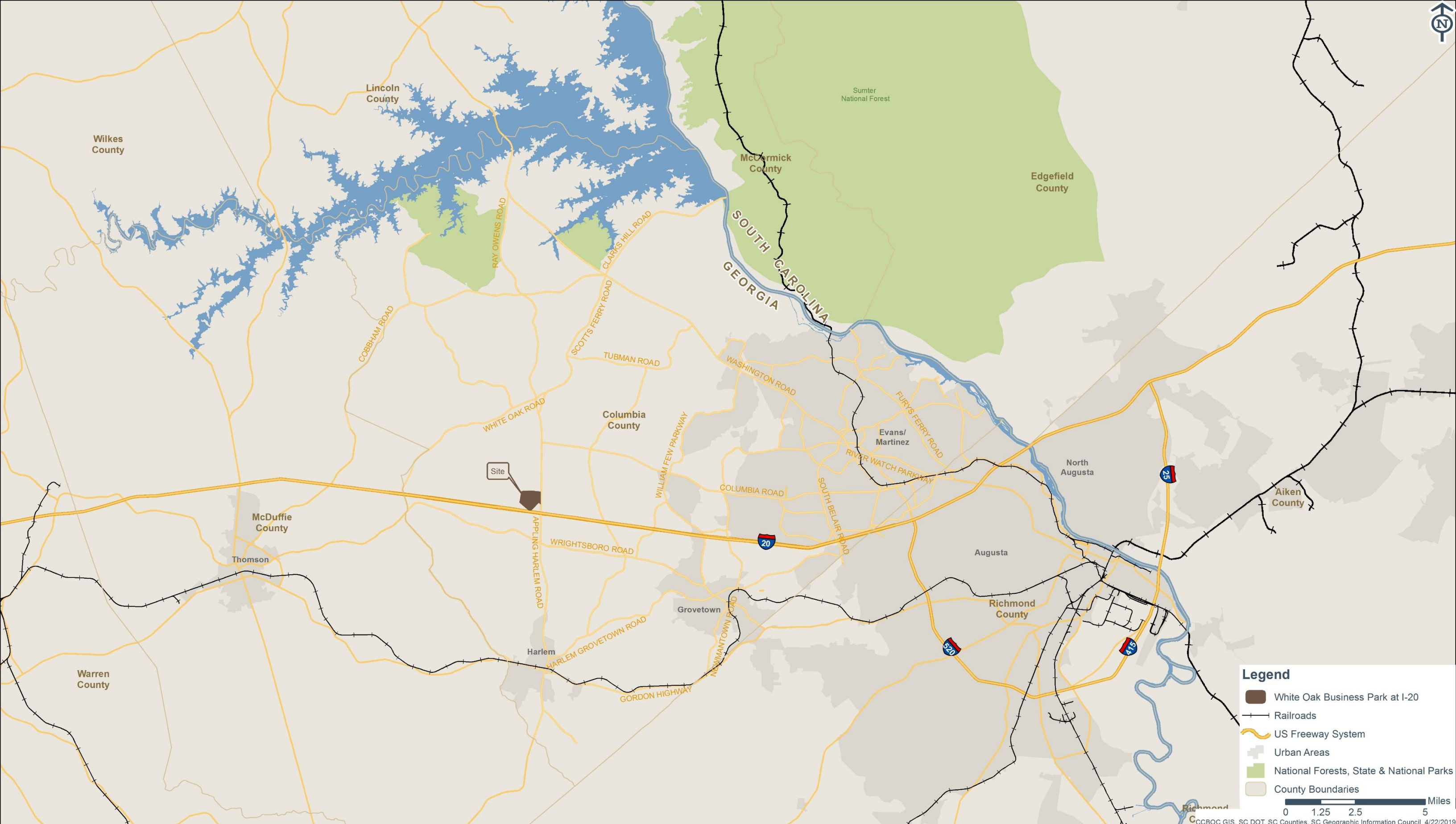
WHITE OAK BUSINESS PARK
 Comprised of nearly 300 acres just off I-20 in Columbia County, Georgia, the White Oak Business Park at I-20 is a modern, upscale business park focused on strengthening the County's innovative manufacturing sector while simultaneously preserving the area's natural resources. The park is an ideal location for companies and operations that are focused on the production and movement of goods in an area that offers competitive operating costs and excellent infrastructure and prioritizes eco-friendly business practices.



WHITE OAK BUSINESS PARK AT I-20
MASTER PLAN
 APRIL 2019 | COLUMBIA COUNTY, GEORGIA

DEVELOPMENT AUTHORITY OF
COLUMBIA COUNTY
 GEORGIA, USA
www.whiteoakbusinesspark.com

50 PARK OF COMMERCE WAY
 SAVANNAH, GA 31405 • 912.234.5300
WWW.THOMASANDHUTTON.COM
This map illustrates a general plan of the development which is for discussion purposes only, does not limit or bind the owner/developer, and is subject to change and revision without prior written notice to the holder. Dimensions, boundaries and position locations are for illustrative purposes only and are subject to an accurate survey and property description.
 COPYRIGHT © 2017 THOMAS & HUTTON



© CCBOC GIS, SC DOT, SC Counties, SC Geographic Information Council 4/22/2019



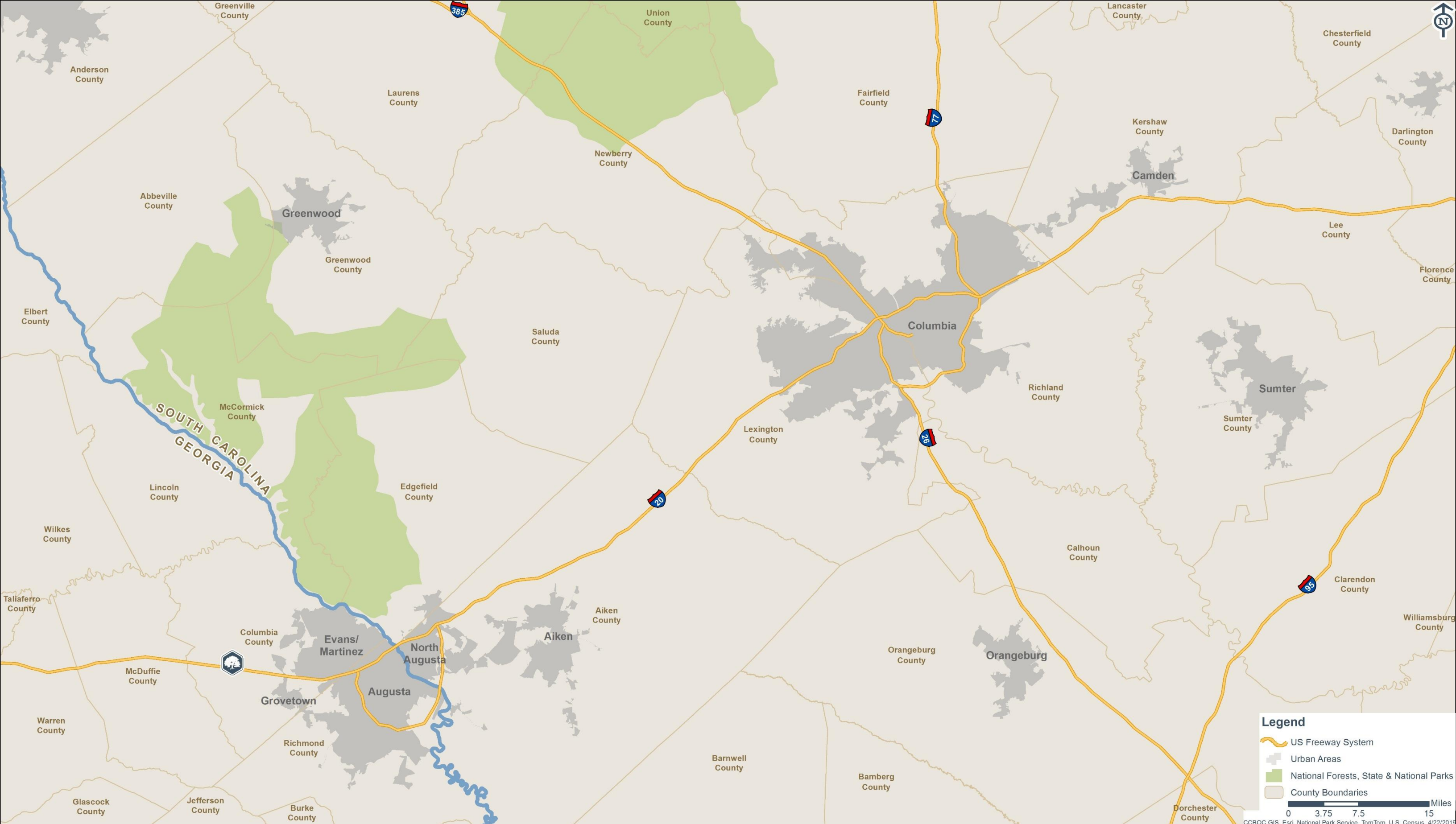
700 Innovation Parkway
 Appling, Georgia 30802
 Latitude: 33.50519 Longitude: -82.31556
www.whiteoakbusinesspark.com

LOCATION MAP

April 2019
 Columbia County, Georgia



For more information contact:
 Development Authority of Columbia County
 706-312-1375
www.developcolumbiacounty.com



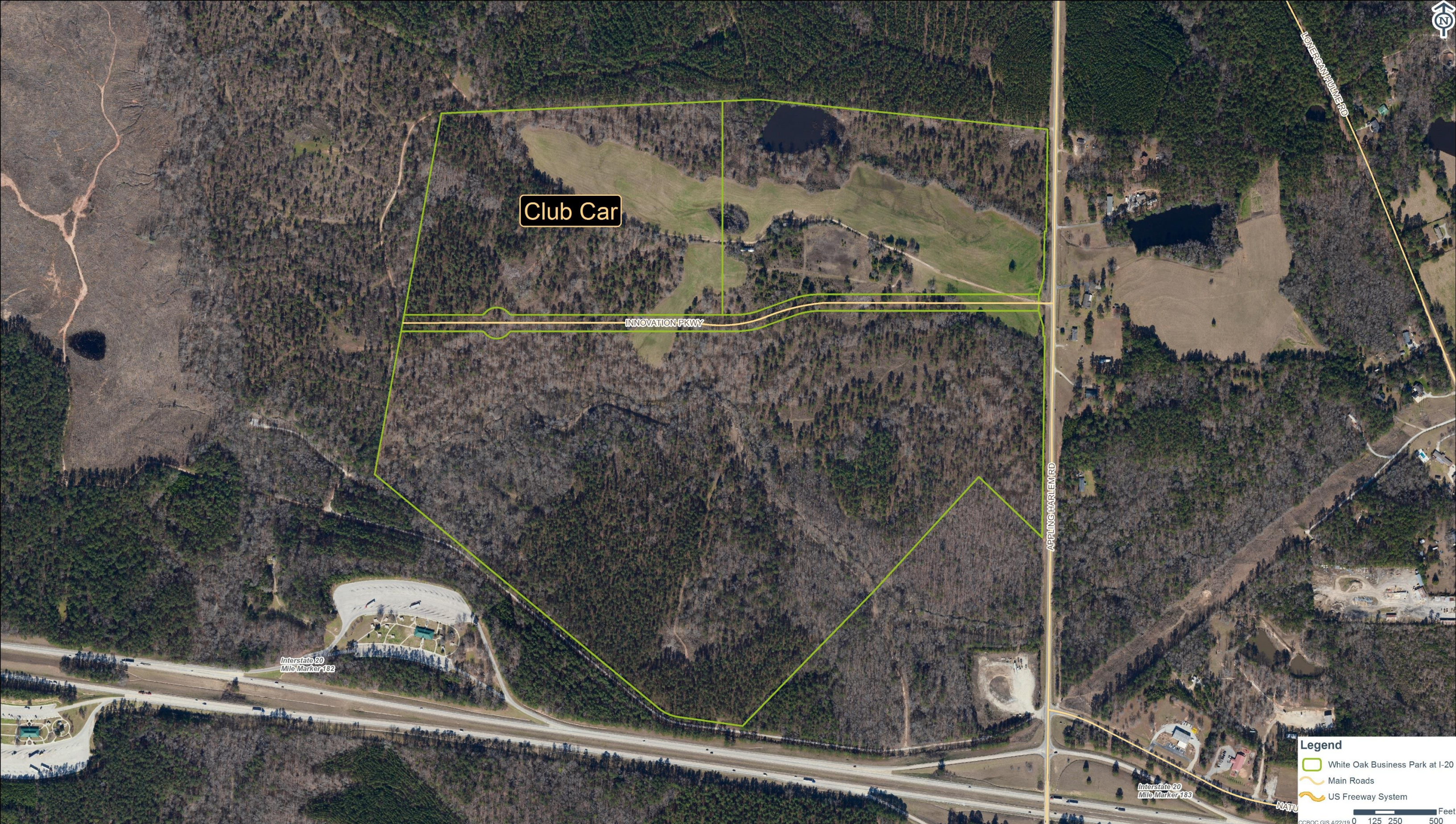
700 Innovation Parkway
 Appling, Georgia 30802
 Latitude: 33.50519 Longitude: -82.31556
www.whiteoakbusinesspark.com

REGIONAL LOCATION MAP

April 2019
 Columbia County, Georgia



For more information contact:
 Development Authority of Columbia County
 706-312-1375
www.developcolumbiacounty.com

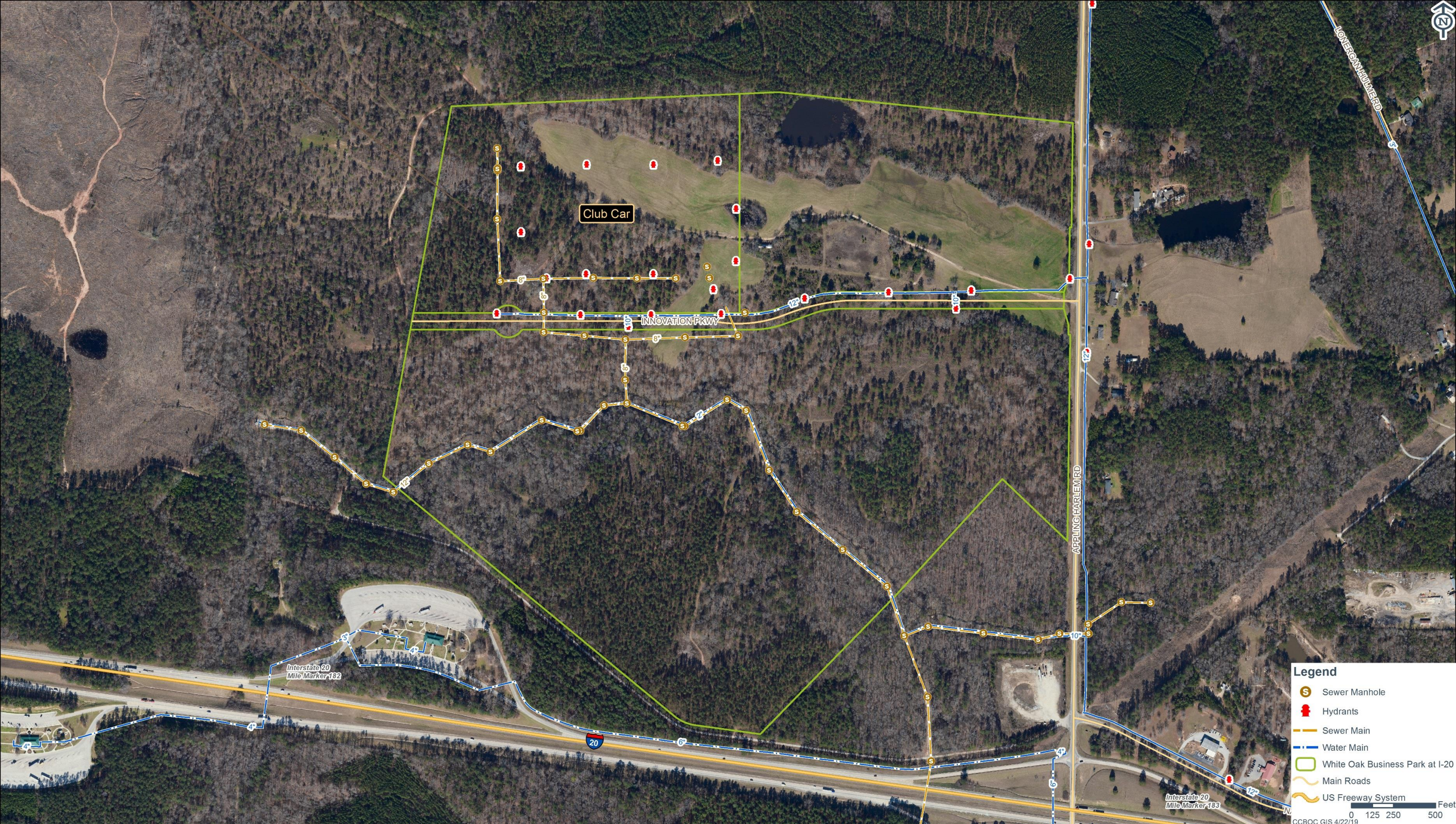


700 Innovation Parkway
Appling, Georgia 30802
Latitude: 33.50519 Longitude: -82.31556
www.whiteoakbusinesspark.com

AERIAL MAP

April 2019
Columbia County, Georgia

For more information contact:
Development Authority of Columbia County
706-312-1375
www.developcolumbiacounty.com



700 Innovation Parkway
 Appling, Georgia 30802
 Latitude: 33.50519 Longitude: -82.31556
www.whiteoakbusinesspark.com

UTILITY MAP

April 2019
 Columbia County, Georgia



For more information contact:
 Development Authority of Columbia County
 706-312-1375
www.developcolumbiacounty.com



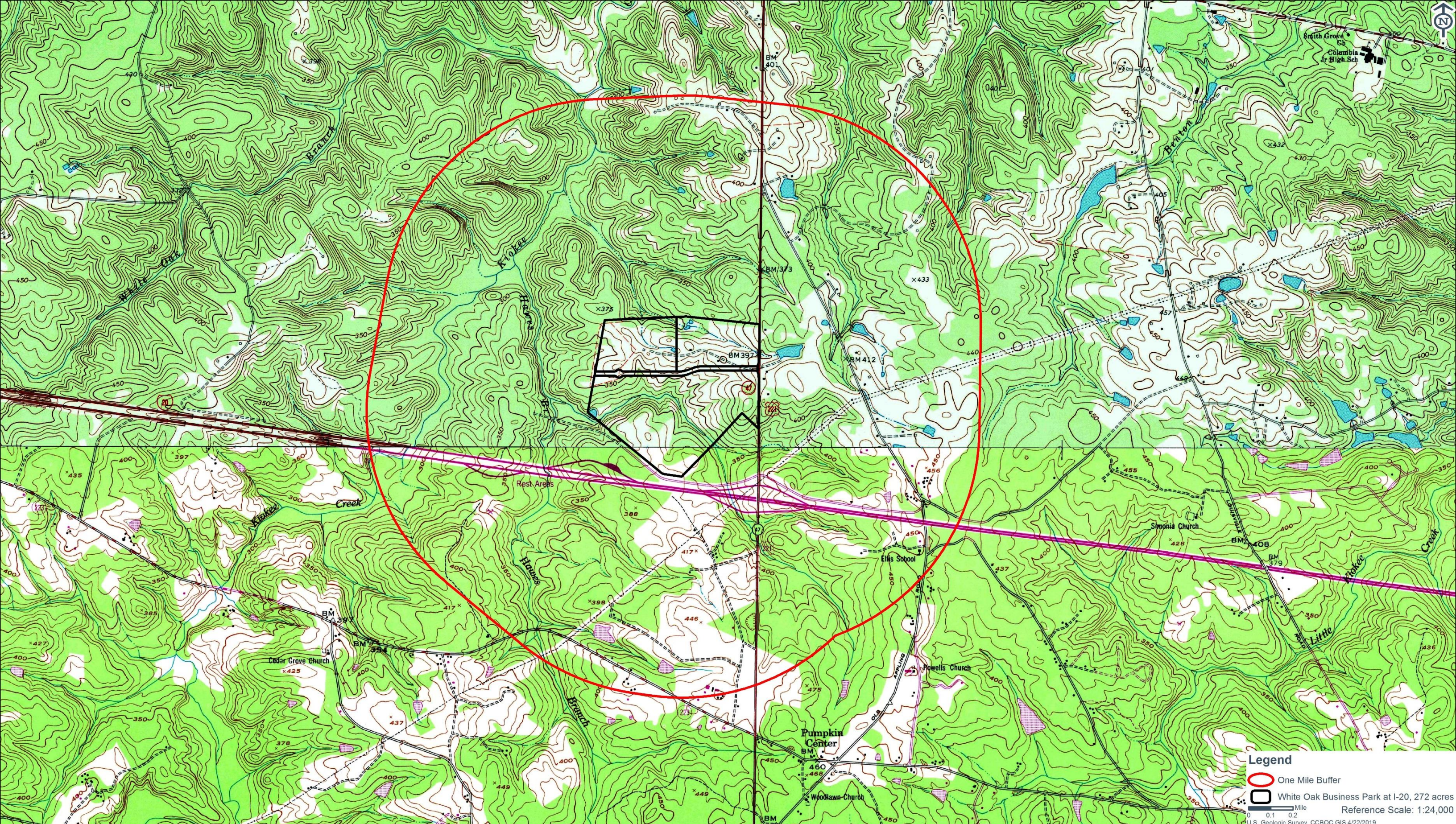
700 Innovation Parkway
 Appling, Georgia 30802
 Latitude: 33.50519 Longitude: -82.31556
www.whiteoakbusinesspark.com

TOPOGRAPHIC MAP

April 2019
 Columbia County, Georgia



For more information contact:
 Development Authority of Columbia County
 706-312-1375
www.developcolumbiacounty.com

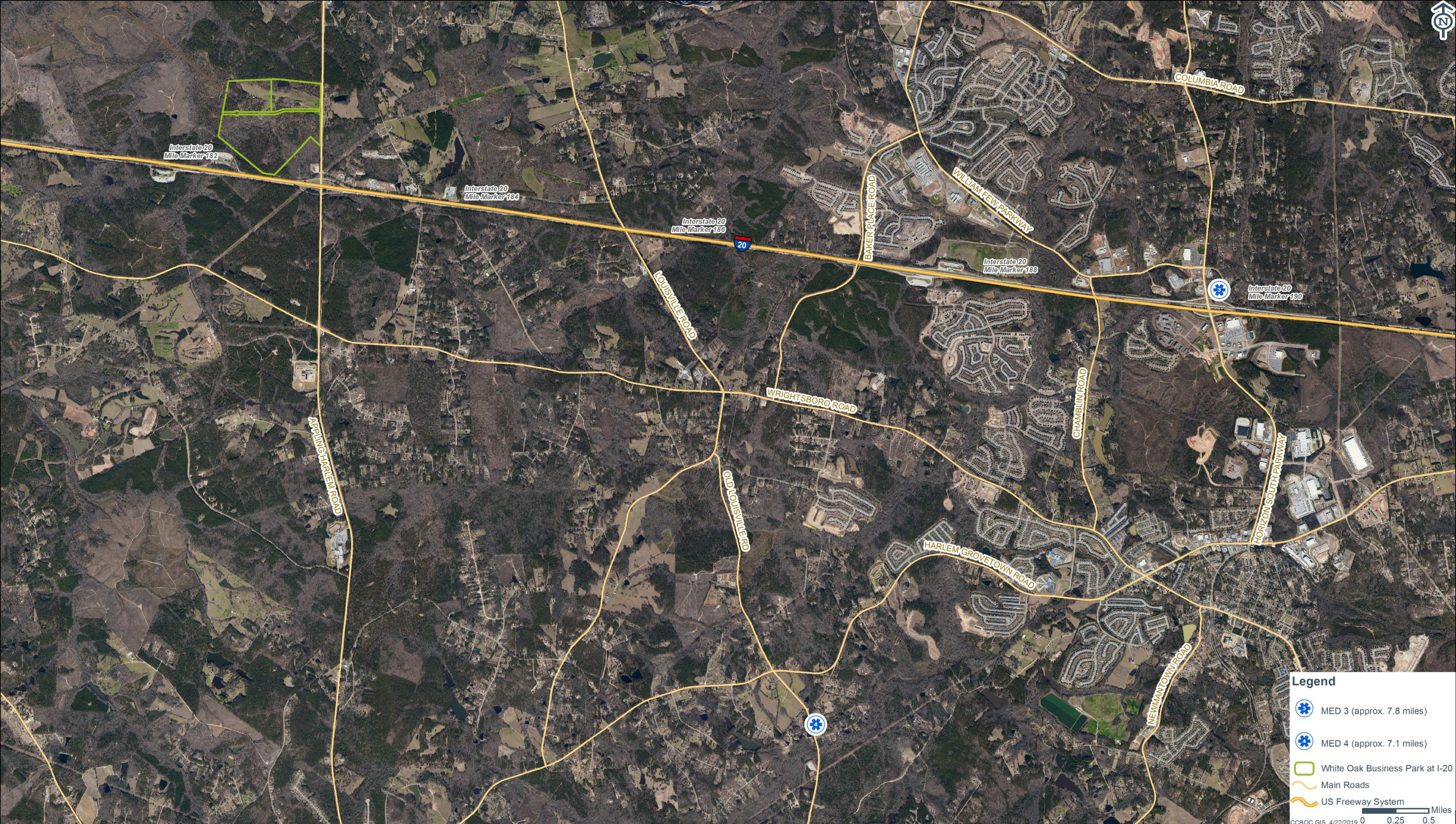


700 Innovation Parkway
 Appling, Georgia 30802
 Latitude: 33.50519 Longitude: -82.31556
 www.whiteoakbusinesspark.com

USGS 7.5-MINUTE QUADRANGLE MAPS

Appling and Harlem Maps Combined
 April 2019
 Columbia County, Georgia

For more information contact:
 Development Authority of Columbia County
 706-312-1375
 www.developcolumbiacounty.com



Legend

- MED 3 (approx. 7.8 miles)
- MED 4 (approx. 7.1 miles)
- White Oak Business Park at I-20
- Main Roads
- US Freeway System

Miles
 0 0.25 0.5
 CCBOC GIS 4/22/2019

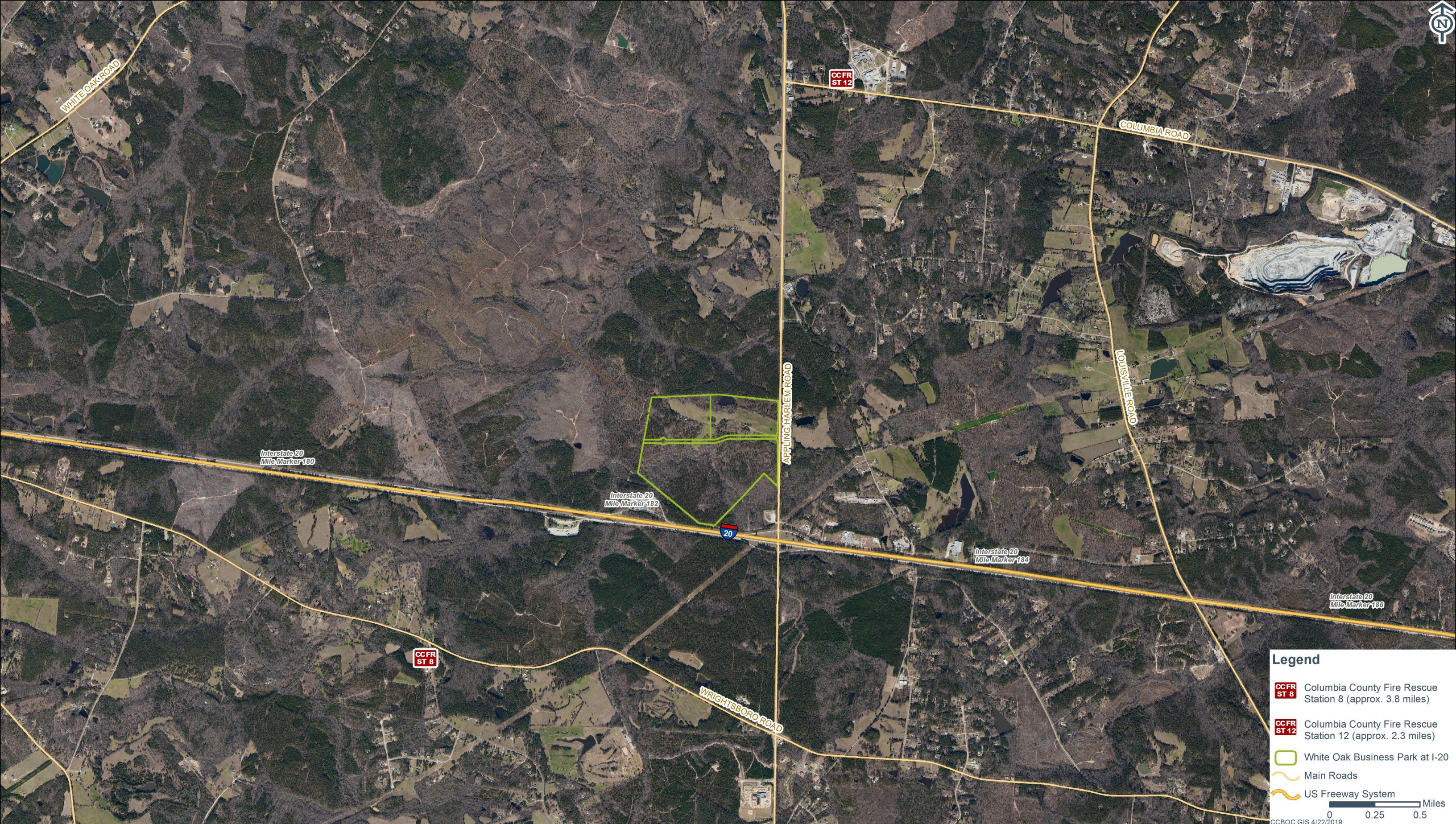


700 Innovation Parkway
 Appling, Georgia 30802
 Latitude: 33.50519 Longitude: -82.31556
 www.whiteoakbusinesspark.com






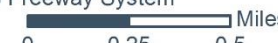
EMS MAP

April 2019
 Columbia County, Georgia

For more information contact:
 Development Authority of Columbia County
 706-312-1375
 www.developcolumbiacounty.com



Legend

-  Columbia County Fire Rescue Station 8 (approx. 3.8 miles)
 -  Columbia County Fire Rescue Station 12 (approx. 2.3 miles)
 -  White Oak Business Park at I-20
 -  Main Roads
 -  US Freeway System
-  Miles
 0 0.25 0.5

CCBOC GIS 4/22/2019



700 Innovation Parkway
 Apling, Georgia 30802
 Latitude: 33.50519 Longitude: -82.31556
www.whiteoakbusinesspark.com

FIRE RESCUE MAP







April 2019
 Columbia County, Georgia



For more information contact:
 Development Authority of Columbia County
 706-312-1375
www.developcolumbiacounty.com



Legend

-  Columbia County Sheriff's Office Substation (approx. 15.3 miles)
-  Columbia County Sheriff's Office (approx. 2.4 miles)
-  Georgia State Patrol
-  White Oak Business Park at I-20
-  Main Roads
-  US Freeway System

0 0.25 0.5 Miles

CCBOC GIS 4/22/2019



700 Innovation Parkway
 Appling, Georgia 30802
 Latitude: 33.50519 Longitude: -82.31556
 www.whiteoakbusinesspark.com

LAW ENFORCEMENT MAP

April 2019
 Columbia County, Georgia



For more information contact:
 Development Authority of Columbia County
 706-312-1375
 www.developcolumbiacounty.com